



INDUSTRIAL ENGINEERING & CONSULTANCY

Solutions of MEP Projects | Services | AMC

www.industrialengineeringconsultancy.com

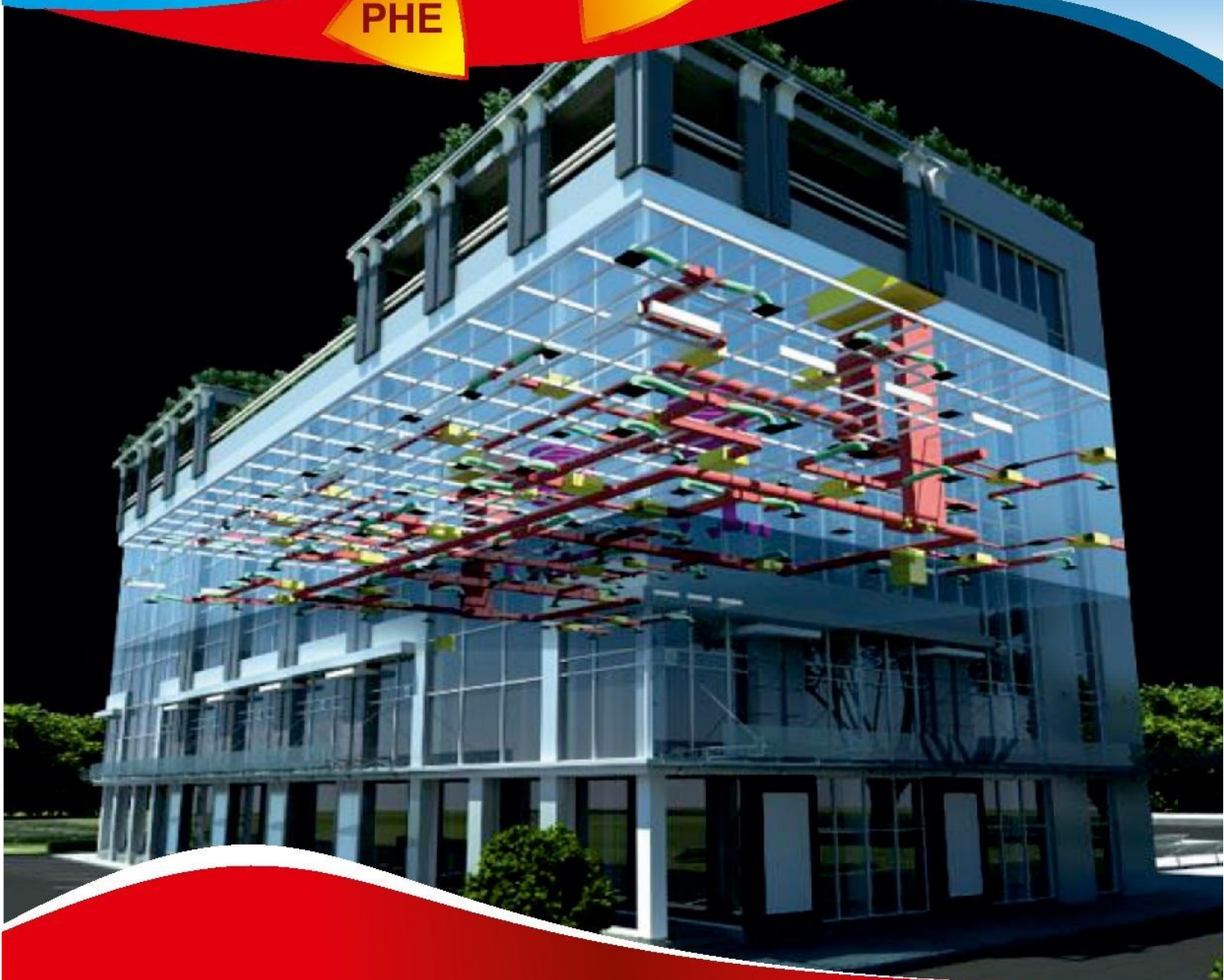
HVAC

ELECTRICALS

FFS

FAS

PHE



info@industrialengineeringconsultancy.com

TABLE OF CONTENTS

Introduction of Company	Page 03
About Us	Page 04
General Information	Page 05
Partner Information	Page 06
Vision – Mission – Values	Page 07
Organization Chart	Page 08
HVAC Solutions	Page 09
Ducting & Grill Work	Page 10
Pharmaceutical Clean	Page 11
Cooling Tower & STP Plant	Page 12
Electricals Solutions	Page 13
Plumbing Solutions	Page 14
Fire Fighting	Page 15
Fire Alarm System	Page 16
Our Valuable Clients	Page 17
Our Valuable Clients	Page 18

INTRODUCTION

Dear Sir,

We would like to take this opportunity to introduce ourselves as a Company which undertakes planning and execution projects maintaining highest standards of Quality.

We undertake all types of Firefighting, HVAC and Electrical project work, Ducting and Ventilation systems, all type of Commercial Project Work, All Type of Plumbing, New AHU and Cleanroom solutions & services. We also supply all type of commercial & domestic air-condition system.

We Undertake AMC: of Firefighting, Plumbing, Alarm system, HVAC, Chiller Plant, High side and low side, Ductable AC, VRV, VRF, AHU, Split AC, Cassette AC, Window Ac. Etc.

We offer: Comprehensive & Non Comprehensive AMC.

We are backed up with a team of skilled and experienced professionals to handle all major projects in all organizations as well as in public and private sectors.

Please find enclosed here with our Brochure, which gives more information about our Work and our Clients, in the above mentioned work areas.

We now request you to kindly register our name as a "MEP Contractor" in your esteemed organization and forward your valuable enquiries to us, to submit our competitive offer.

If there is anything more we could do for you, please do not hesitate to write to us. We at "M/S. INDUSTRIAL ENGINEERING & CONSULTANCY" assures you for the best services at all times.

Yours sincerely,



M/S. **INDUSTRIAL ENGINEERING & CONSULTANCY.**

About INDUSTRIAL ENGINEERING & CONSULTANCY

We were in this trade since 2009 marketing organized sector Fire Fighting, HVAC, Engineering & Plumbing. With our dedicated hard work and having a quality conscious for product, we got a good response from local consumer for INDUSTRIAL ENG. CONSULTANCY. The combination of technology and customer service helped INDUSTRIAL ENG. CONSULTANCY to penetrate in local market and established its brand locally and in upcountry market. We are one of the most respected organizations in the field of Fire Fighting, HVAC Plumbing System including pumps & treatment plants in India, and its service portfolio extends across the country for Hotel, Commercial, Residential complex, Hotels, Mall & Multiplex projects having a reputation for quality and timely completion.

Having its own distinct identity, the division is managed by highly qualified personnel and skilled support staff, Engineers/technicians.

In Fire Protection timely completion and prompt maintenance is critical. We have an excellent team of service & maintenance engineers who can help you to achieve this promptly. Our services would be available to you to survey your premises and assess your requirements of fire fighting equipment's, whether if it is first aid fire extinguishers or even fixed fire protection systems. We thus bring you the full range.

“We believe in Quality Services”

GENERAL INFORMATION

Reg. Office: 101/509, Katariya Nagar CHS Ltd,
Opp. New Model Cinema, New Mill Road, Kurla, West,
Mumbai 400070

MUMBAI

Gala No. 651, Choudhary Compound ,
Indira Nagar , LBS Road , Kurla West ,
Mumbai - 400070.

**DUCTING
FACTORY**

**GRILLS
(AIR FLOW)
FACTORY**

Add: A/06, Super Hsg. Soc, Transformer Lane,
LBS Nagar, Khadi No. 3,90 feet Road, Sakinaka,
Mumbai - 400072

Contact:

MATEEN KHAN Mobile No.: +91 - 9892659225

KAZI FAKRUDDIN Mobile No.: +91 - 9819431537

Email ID : info@industrialengineeringconsultancy.com
: industrialengineering11@yahoo.com

Web Site : www.industrialengineeringconsultancy.com

Office No. : 022 - 26523232

PAN No. : AADI0537R

GST No. : 27AADFI0537R1Z0

05

PARTNERS INFORMATION



Mr. KAZI FAKRUDDIN

Partner

INDUSTRIAL ENGINEERING & CONSULTANCY. has travelled miles in its professional journey since 2009 where the founder **Mr. KAZI FAKRUDDIN** had laid the sound foundation. Since then we have sailed across a turbulent water yet maintained its speed and stamina to excel in all its ventures and delivered quality products on time.



Mr. MATEEN KHAN

Partner

INDUSTRIAL ENGINEERING & CONSULTANCY. **Mr. MATEEN KHAN** Having 17 years experience in Technical. (Diploma Engineering). "Successful salespeople don't try to convince customers that their product or service is right for them. Instead, they begin by listening and finding out if the potential customer is a good fit before leaping for the sale."



VISION - MISSION - VALUE

VISION

To be the service provider of choice for our customers through Constant innovation, assured quality and efficient processes.

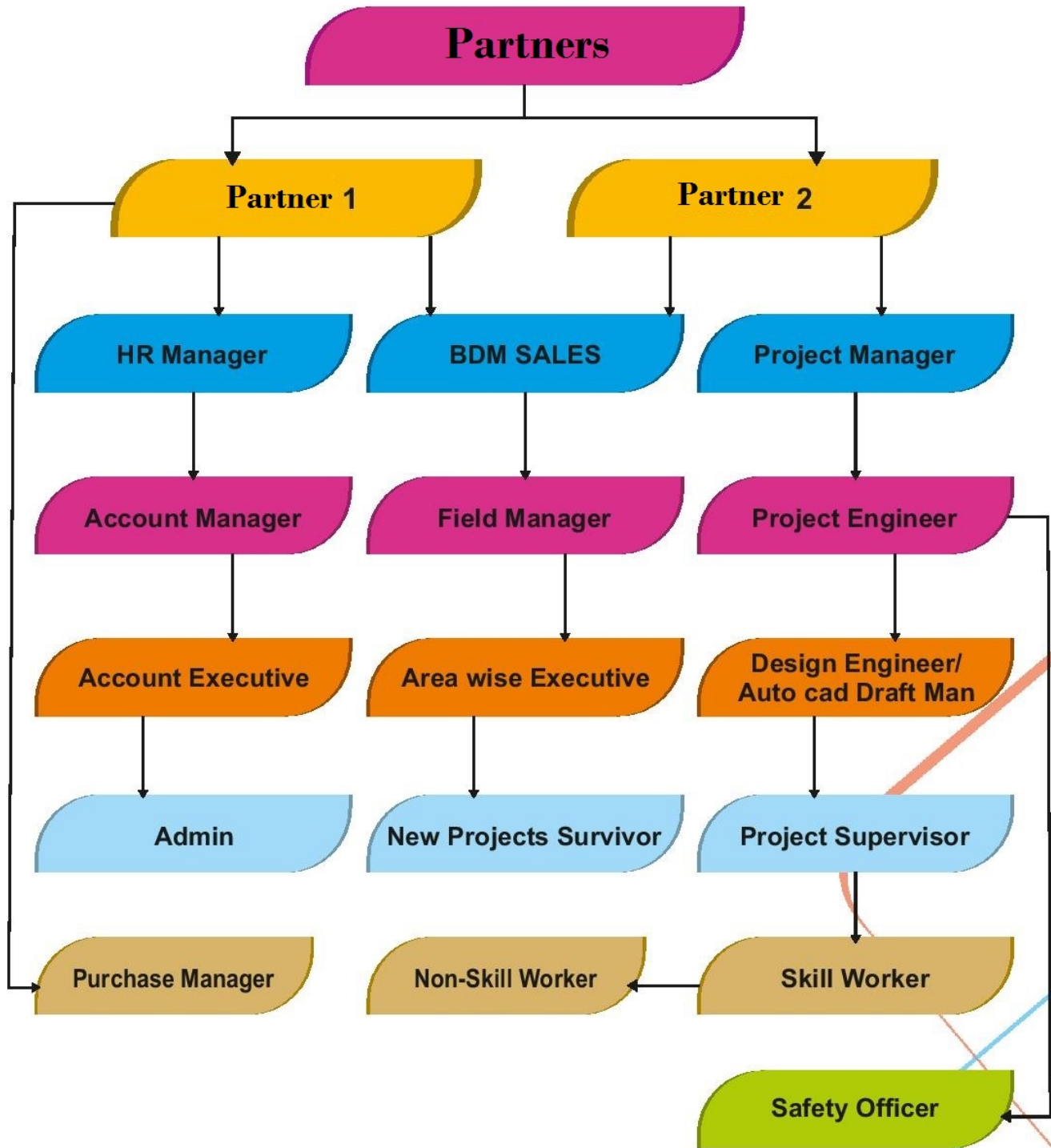
MISSION

Our mission is to be a trusted partner providing comprehensive and reliable services to add value to our clients and create an environment for growth of all stakeholders.

Values

Our mission is to be a trusted partner providing comprehensive and reliable services to add value to our clients and create an environment for growth of all stakeholders.

ORGANIZATION CHART



COMPLETE HVAC SOLUTIONS



Heating, ventilation, and air conditioning (HVAC) is the technology of indoor and vehicular environmental comfort. Its goal is to provide thermal comfort and acceptable indoor air quality. HVAC system design is a sub discipline of mechanical engineering, based on the principles of thermodynamics, fluid mechanics and heat transfer. "Refrigeration" is sometimes added to the field's abbreviation, as HVAC&R or HVAC "ventilation" is dropped, as in HACR (as in the designation of HACR-rated circuit breakers).

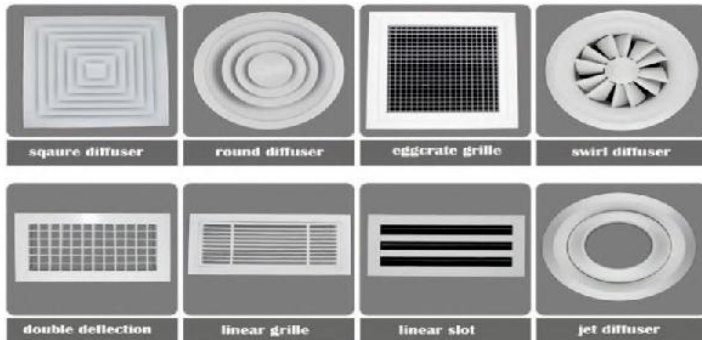
HVAC is an important part of residential structures such as single family homes, apartment buildings, hotels and senior living facilities, medium to large industrial and office buildings such as skyscrapers and hospitals, vehicles such as cars, trains, airplanes, ships and submarines, and in marine environments, where safe and healthy building conditions are regulated with respect to temperature and humidity, using fresh air from outdoors.

Ventilating or ventilation (the V in HVAC) is the process of exchanging or replacing air in any space to provide high indoor air quality which involves temperature control, oxygen replenishment, and removal of moisture, odors, smoke, heat, dust, airborne bacteria, carbon dioxide, and other gases. Ventilation removes unpleasant smells and excessive moisture, introduces outside air, keeps interior building air circulating, and prevents stagnation of the interior air.

DUCTING & GRILL WORK

INDUSTRIAL ENGINEERING & CONSULTANCY IS ONE OF THE LEADING ORGANIZATION INVOLVED IN MANUFACTURING OF ALUMINUM EXTRUDED LINEAR GRILLS , COLLOR DAMPS, POWDER COATING

Other Products



Ducts are conduits or passages used in heating, ventilation, and air conditioning (HVAC) to deliver and remove air. The needed airflows include, for example, supply air, return air, and exhaust air. Ducts commonly also deliver ventilation air as part of the supply air. Adduct system is also called ductwork.

PHARMACEUTICAL CLEAN



A cleanroom or clean room is a facility ordinarily utilized as a part of specialized industrial production or scientific research, including the manufacture of pharmaceutical items and microprocessors. Cleanrooms are designed to maintain extremely low levels of particulates, such as dust, airborne organisms, or vaporized particles. Cleanrooms typically have a cleanliness level quantified by the number of particles per cubic meter at a predetermined molecule measure. The ambient outdoor air in a typical urban area contains 35,000,000 particles for each cubic meter in the size range $0.5\ \mu\text{m}$ and bigger in measurement, equivalent to an ISO 9 cleanroom, while by comparison an ISO 1 clean room permits no particles in that size range and just 12 particles for each cubic meter of $0.3\ \mu\text{m}$ and smaller.

COOLING TOWER & STP PLANT



A **cooling tower** is a heat rejection device that rejects waste heat to the atmosphere through the cooling of a water stream to a lower temperature. Cooling towers may either use the evaporation of water to remove process heat and cool the working fluid to near the wet-bulb air temperature or, in the case of closed circuit dry cooling towers, rely solely on air to cool the working fluid to near the dry-bulb air temperature.

ELECTRICAL SOLUTIONS



Electrical technicians help create, maintain and repair the electronic components and equipment used in any equipment or device that involves electricity. They can sometimes work with electricians or electrical engineers, or work on site to keep machinery and specialty equipment running correctly.

Electricity is the set of physical phenomena associated with the presence and motion of matter that has a property of electric charge. In early days, electricity was considered as being not related to magnetism. Later on, many experimental results and the development of Maxwell's equations indicated that both electricity and magnetism are from a single phenomenon: electromagnetism.

PLUMBING SOLUTIONS



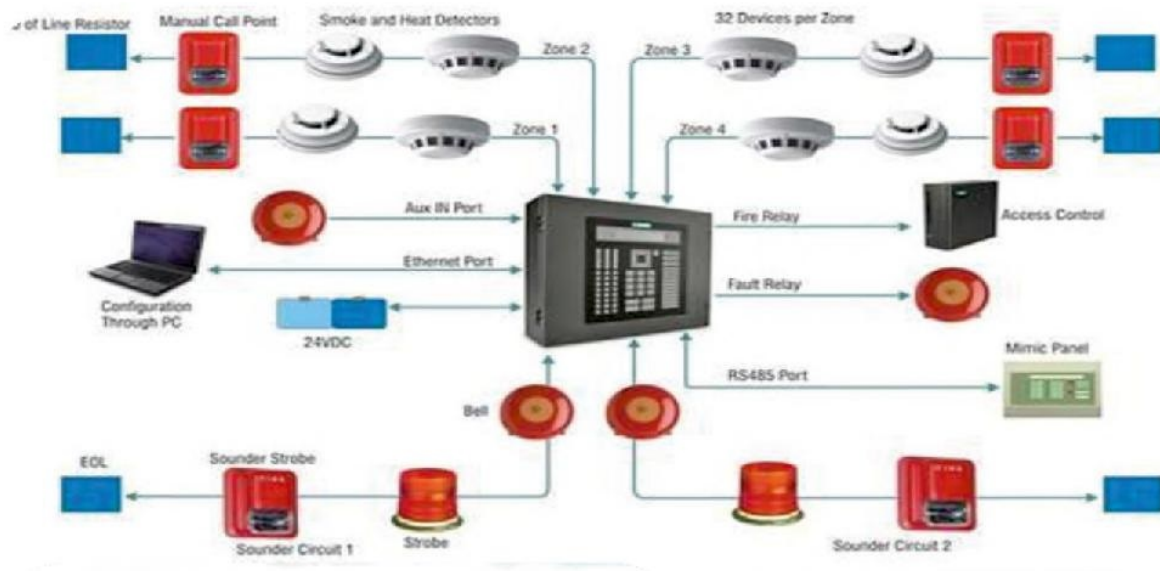
Plumbing is a term used to describe the technology and connections between systems in a cloud computing model. It includes the systems, storage, network and the interconnection components that form the cloud environment. The term is an analogy to the plumbing of water systems. Just as water is carried from reservoirs to homes and usage centers, the data from data centers is delivered to the end stations via its plumbing. The quality of plumbing decides the efficiency of the applications and services delivered.

FIRE FIGHTING SYSTEM



We are engaged in Design, Supplying, Installing, Testing & commissioning of All Types of Complete Fire Fighting & Fire Detection Solutions including Fire Fighting Systems, Fire Protection Systems, Fire Equipment's, Fire Extinguisher, Fire Sprinkler Systems, Fire Alarm Systems, Smoke Detectors, etc. for industrial, commercial & residential projects & all govt./public sectors. Also offering commercial fire sprinkler, automatic fire sprinkler, fire protection systems, pressurized water fire extinguisher, fire extinguisher equipment. These services include the installation and maintenance of the equipment and systems.

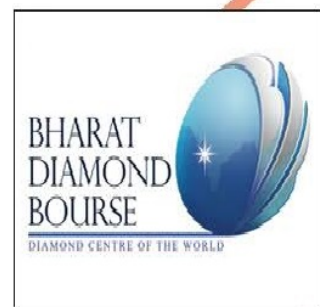
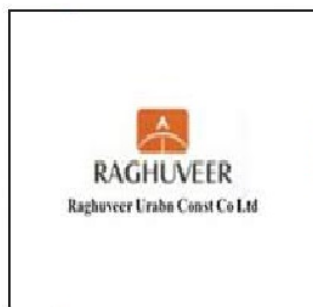
FIRE ALARM SYSTEM



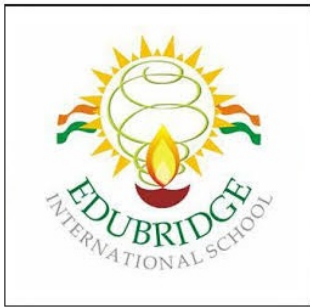
A fire alarm system is an active fire protection system that controls all the fire alarm modules in a building. It is composed of alarm initiating devices (smoke detectors and heat sensors), alarm notification appliances (sirens or devices that produce loud noises), fire control units (sprinkler systems or fire extinguisher systems), power supplies and wirings. But how do they work?

The fire alarm system can be set off automatically by smoke detectors, heat detectors or manually. These sensors are set to detect certain levels of heat or smoke that could be an indication of fire. A loud bell or a siren sometimes accompanied by blinking or flashing lights for individuals who have hearing problems, blasts to alert occupants in the building. To truly understand how a fire alarm system works, let us go further into the components of the fire.

OUR VALUABLES CLIENTS



OUR VALUABLES CLIENTS





Thank You

Regd. Office: 101/509, Katariya Nagar, CHS. Ltd.,
New Mill Road, Opp. New Model Cinema, Kurla (W). Mumbai – 400070
Phone No. 022-26523232

Email ID .

info@industrialengineeringconsultancy.com

industrialengineering11@yahoo.com



www.industrialengineeringconsultancy.com